



Westside Village Homeowners Association  
www.westsidevillage.org  
September 2011

# Westside Village News & Views



## The 8th Annual Westside Village Fall Festival is coming up!!

**Saturday, October 1, 2011**

**11:00 a.m. to 4:00 p.m.**

**St. John's Presbyterian Church  
at 11000 National Blvd.  
(corner of Military)**

What would the beginning of the Fall season be without our Annual Festival? Once again we'll be getting together the first weekend in October, so do make a careful note of the date and times: Saturday, October 1st, from 11AM – 4PM. Our food lines will be open from 12 NOON through 3PM.

The event is on the grounds of St. John's Church (11000 National Blvd at Military Ave.) The admission fee, including a lunch ticket, will remain at \$3/person for paid WVHA members and \$6/person for non-members; children under 3 enter at no charge. Please note that there will be an ice cream truck on site this year; cones and sundaes will be available for purchase.

If you've forgotten to pay your WVHA dues, now would be the perfect time to send \$10 to our Treasurer, Joyce Purcell, at 3316 Kelton Ave., L.A. 90034.

This year's activities will include the ever-popular bounce house, pony rides and a petting zoo, hair braiding, face painting, and visits from both the LAPD and the LAFD. We fully expect the folks from Eco Station will bring a few creepy critters for the bravest kids to befriend. Musical performances by children studying at both the Cornerstone Music Conservancy and the Hollywood Academy of Rock are planned. And, of course, our local elementary schools will have representatives to field any and all of your questions.

Our table exhibits will offer information on environmental issues, green living, education, senior living, and emergency preparedness. Those expected to attend include folks from Ballona Creek Renaissance, Tree People, Heal the Bay, WISE Senior



Services, CERT (Community Emergency Response Teams), California Solar, and Mathnasium, a leading math tutoring firm.

As many of you know we are soliciting entries for two bake-offs: one for children and one for adults. Those stalwart bakers who have decided to compete will have their creativity judged at approximately 1:00 PM. Please email Carolyn at [crsaltsman@ca.rr.com](mailto:crsaltsman@ca.rr.com) for more information.

We are also anxious to hear from any local artisans who would like to display their creations; local service providers are also welcome to offer information about their specialties. Please email Andy at [amcomins@yahoo.com](mailto:amcomins@yahoo.com) for more details.

The good folks who coordinate our Neighborhood Watch program and reach out to all our generous Block Captains will update us about their extraordinary and on-going efforts to assure our community's safety; and our Senior Lead Officer from LAPD's Pacific Division, Juan Ceja, and local Council members will surely be glad to address your problems and concerns.

Of course, the kids' favorite, our perennial Water Balloon Toss, will close out the afternoon. All winners will receive either complimentary movie tickets from Landmark Theaters or gift certificates from Barnes and Noble.

The Annual Fall Festival represents an opportunity to meet, network with, and make new friends. Your kids can hang with their buds and even meet someone new. So, please come and enjoy a wonderful early fall day with your Westside Village neighbors.

See you there!

## Thank You To My Neighbors!

By Karen Jessen-Stecher

On Saturday afternoon, August 13th, I was out walking with a neighbor's dog on Charnock Road, when I suddenly tripped over the curb and fell pretty hard right on my face and started to bleed heavily. A car came to a stop at the corner, and the passengers immediately jumped out and started assisting me, eventually driving me to my house, looking for neighbors who would recognize me, taking the dog back to his house, and all the while assisting me and comforting me. Eventually my neighbors were located and they immediately called for an ambulance giving them pertinent information about me and seeing to it that I was taken care of.

I do not know who the people were who stopped the car and assisted me although they said they lived in the neighborhood.

I am writing this letter hoping that they read this

because I want to thank them for their very kind and warm action. It was heartwarming to be the recipient of so much caring and real concern. I would like them to know that I am getting better. I suffered a broken nose and injured my hand, but the head and neck x-rays were okay.

I also want to thank my neighbors who helped me and have checked up on me since the incident. I feel very fortunate to live in a neighborhood where people look out for each other.

My sincere thanks to all.

## Pacific Standard Time: Art in L.A. 1945 – 1980

By Brian Considine

*Pacific Standard Time: Art in L.A. 1945-1980* ([www.pacificstandardtime.org](http://www.pacificstandardtime.org)) is a celebration of the arts in Southern California involving a collaboration of more than sixty museums and cultural institutions. Initiated through a grant from the Getty Foundation, beginning in October and continuing for at least six months, *Pacific Standard Time* (PST) will tell the story of post-World War II art through exhibitions and performances. While heavily concentrated in Los Angeles, the manifestations of PST will extend from San Diego to Santa Barbara and Palm Springs. Each venue will tell its own part of the very rich story of technical and artistic innovation that took place during the decades of the great social upheaval such as the 60's and the 70's. This was a period that saw artistic movements that mirrored the national and international arts scenes, for example Pop Art, Post-minimalism, multi-media art installations, Feminism, Chicano Art and artists' collectives.

"The exhibitions, and the events that will accompany them as part of PST will demonstrate the pivotal role played by Southern California in national and international artistic movements since the middle of the twentieth century" said Deborah Marrow, director of the Getty Foundation. The Post-War art scene in Los Angeles included such renowned artists as John Baldessari, Ed Ruscha, Judy Chicago, Ed Keinholz and Betye Saar, curators Henry Hopkins and Walter Hopps and gallerists Irving Blum, Patricia Faure and Stanley Grinstein among others.

PST marks the long-term effort by curators at the Getty Research Institute to record and document the rich history of art in Southern California following World War II. Their process consists of acquiring artists' papers and other archives, oral history interviews, public programming, exhibitions and publications. Their major presentation will be an exhibition opening at the Getty Museum on October 1 entitled: *Pacific Standard Time: Crosscurrents in L.A. Painting and Sculpture, 1950-1970*, but there are several

others: *Greetings from L.A.: Artists and Publics, 1950–1980*, and the Getty Conservation Institute will present: *From Start to Finish: De Wain Valentine's Gray Column*.

Among the other PST exhibitions are:

### 1. The Autry National Center Art

*Along the Hyphen: The Mexican American Generation*  
October 14, 2011 – January 8, 2012

### 2. The California African America Museum (CAAM)

*Places of Validation, Art and Progression*  
September 29, 2011 – April 12, 2012

### 3. The Chinese American Museum

*Breaking Ground: Chinese American Architects in Los Angeles (1945 – 1908)*  
January 19, 2012 – June 3, 2012

### 4. The Fowler Museum at UCLA (with UCLA Chicano Studies Research Center)

*Mapping Another L.A.: The Chicano Art Movement*  
October 16, 2011 – February 26, 2012

### 5. The Hammer Museum, UCLA

*Now Dig This! Art and Black Los Angeles 1960 – 1980*  
October 2, 2011 – January 8, 2012

### 6. The Japanese American National Museum

*Drawing the Lines: Japanese American Art, Design and Activism in Post-War Los Angeles*  
October 8, 2011 – February 19, 2012

### 7. The Los Angeles County Museum of Art (LACMA)

*California Design, 1930 – 1965: 'Living in a Modern Way'*  
October 1, 2011 – March 25, 2012

(There are several other *Pacific Standard Times* exhibitions at LACMA as well)

### 8. The Los Angeles Municipal Art Gallery (with the City of Los Angeles Department of Cultural Affairs)

*Civic Virtue: The Impact of the Los Angeles Municipal Art Gallery and the Watts Towers Art Center*  
December 15, 2011 – February 12, 2012

### 9. The Museum of Contemporary Art (MOCA)

The Geffen Contemporary

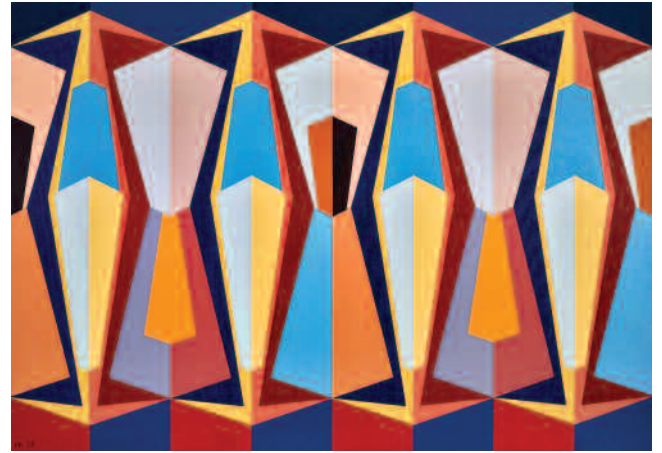
*Under the Big Black Sun: California Art 1974 – 1981*  
October 2, 2011 – February 13, 2012

### 10. The Santa Monica Museum of Art

*Beatrice Wood: Career Woman – Drawings, Paintings, Vessels and Objects*  
September 10, 2011 – March 3, 2012

A detailed listing of all PST exhibitions and events can be found at [www.pacificstandardtime.org](http://www.pacificstandardtime.org).

PST offers all of us an unprecedented opportunity to enjoy a coordinated series of exhibitions and events and to glean a new understanding of the arts of today and of the pivotal role that Southern California artists have played in their development.



Stage II, 1958

Karl Benjamin (American, born 1925)

Oil on canvas

© Karl Benjamin, courtesy Louis Stern Fine Arts

© Photography by Gerard Vuilleumier



Blue Planet, 1965

Helen Lundeberg (American, 1908 - 1999)

Acrylic on canvas

© Feitelson Arts Foundation, courtesy Louis Stern Fine Arts

# Bake-Off at the WVHA Annual Fall Festival



## Two Bake-Off Contests

Adult's and Children's (up to age 13) contests

**October 1st** is the date

**St John's Church** is the place

**By 1:00 p.m.** don't be late

**Judging at 1:30** will be done

**Don't miss out**, bring your specialty

**Join the fun!**

Email Carolyn Saltsman at  
[crsaltsman@ca.rr.com](mailto:crsaltsman@ca.rr.com)  
to reserve a space for your entry.

*Banquet tables graciously donated  
for the Annual Festival by:*

# Hillcrest Party Rentals

**Bernie Sanshuck**, *Vice President*  
3507 Motor Avenue • Los Angeles, CA 90034  
Tel: 310-837-9009 • Cell: 310-261-8607  
[www.HillcrestPartyRentals.com](http://www.HillcrestPartyRentals.com)



## Please let us know what you think.

If you wish to contribute to News and Views,  
please email us at [westsidevillageboard@yahoo.com](mailto:westsidevillageboard@yahoo.com)  
Visit us at [www.westsidevillage.org](http://www.westsidevillage.org)

## Officers and Directors

*President,*  
Richard Saltsman  
[richwvca@ca.rr.com](mailto:richwvca@ca.rr.com)

*Vice President,*  
Kristin Killey

*Secretary,*  
Brian Considine

*Treasurer,*  
Joyce Purcell

*Directors,*  
Ken Alpern  
Andy Comins  
Donald Elliott Jr.  
John Moyer  
Carolyn Saltsman  
Roberta Schiller  
Greg Severson  
Ken Williams